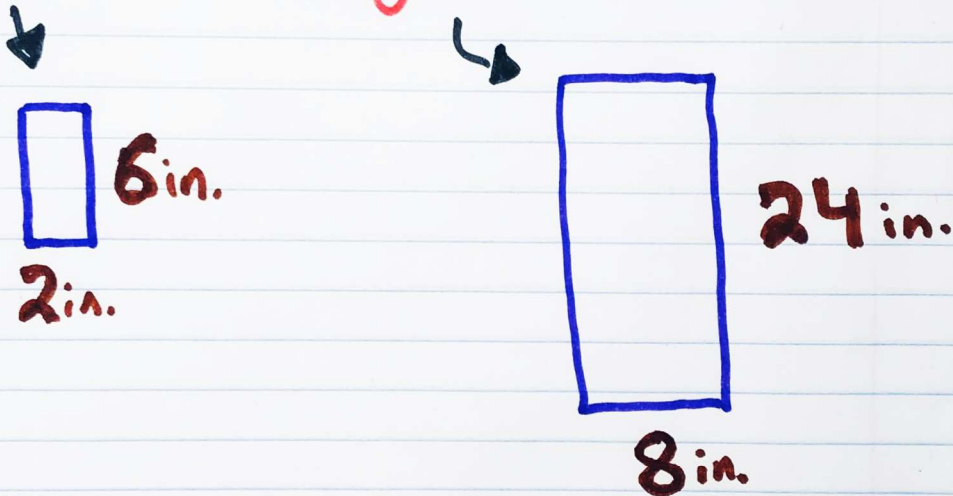


## Lesson 14-5 → Finding Scale Factor

Scale factor is like a RAY GUN that shrinks or enlarges figures.

Proportions are constant with scale factor

What is the scale factor from Figure 1 to Figure 2?



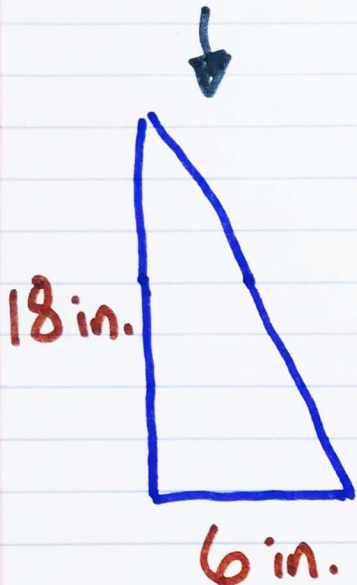
6 times Scale factor equals 24

$$\begin{array}{r} 6s = 24 \\ \underline{\quad} \quad \underline{\quad} \\ 6 \quad \quad 6 \end{array}$$

Divide both sides by 6 to find the scale factor!

$$\text{Scale Factor} = 4$$

What is the scale factor from Figure 1 to Figure 2



18 times Scale factor equals 9

$$\frac{18s}{18} = \frac{9}{18}$$

Divide both sides by 18 to find the scale factor

$$\text{Scale factor} = 0.5$$